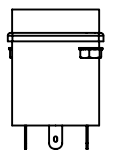
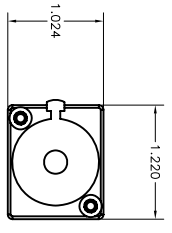
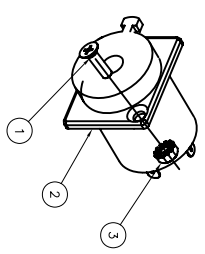
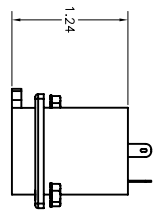
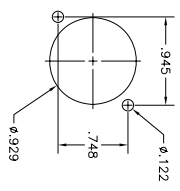


| ITEM NO. | DESCRIPTION | QTY. |
|----------|---------------------------|------|
| 1 | FLAT HEAD SCREW | 20 |
| 2 | CONNECTOR | 10 |
| 3 | HEX NUT WITH TOOTH WASHER | 20 |

| CATALOG # | DESCRIPTION |
|-----------|--------------------|
| 14S10 | 1/4 JACK CONNECTOR |



PANEL CUT OUT



- NOTES:
UNLESS OTHERWISE SPECIFIED:
1. SPECIFICATIONS SUBJECT TO CHANGE WITHOUT NOTIFICATION.
 2. SOLD IN QTY OF 10 PER BAG.
 3. SUGGESTED PRECISION NUT DRIVER USED FOR INSTALLATION REF, WIHA 265 SERIES NUT DRIVER.

| | | | | | | | | | | | | | | | |
|--------------------|--|-------------|--|-----------|--|--------------------------------|--|-------------|--|------------------------|--|---|--|--|--|
| A | | 5869 | | 6/20/06 | | INITIAL RELEASE | | CRJ | | CHG BY | | APPD BY | | Created on AUTOCAD | |
| REV. | | EGN | | DATE | | DESCRIPTION | | CHG BY | | APPD BY | | <p>DIMENSIONING AND TOLERANCE PER ANSI Y14.5M-2002 UNLESS OTHERWISE SPECIFIED. DIMENSIONS ARE IN INCHES (MM).</p> <p>TOLERANCES</p> <p>.XX = ±.01 (.25)</p> <p>.XXX = ±.005 (.127)</p> <p>.XXXX = ±.0025 (.0635)</p> <p>ANGLE TOL. ±1°</p> <p>IN ACCEPTING OUR DRAWINGS, BUYERS, OR SUPPORTING ENGINEERS, OR SUPPLIERS, OR OTHER PURPOSES, YOU AGREE NOT TO DISCLOSE TO OTHERS THE IDEAS, INFORMATION, OR DESIGNS SHOWN HEREIN, AND THAT YOU WILL MAKE NO USE OF SAME WITHOUT PERMISSION.</p> | | | |
| PROJECT REFERENCE: | | 2005-20 | | DRAWN BY: | | C. JOHNSTON 6/20/06 | | CHECKED BY: | | G. KIERSTAD 7/5/06 | | APPROVED BY: | | G. KIERSTAD 7/5/06 | |
| MATERIAL: | | | | TITLE: | | 1/4 JACK PANEL MOUNT CONNECTOR | | HUBBELL | | Hubbell Premise Wiring | | HUBBELL INCORPORATED (Delaware) | | 14 Lord's Hill Road, Stonington, Connecticut 06378 | |
| SIZE | | DRAWING NO. | | SCALE: | | C | | HWS12429C | | SHEET | | 1 OF 1 | | REV. A | |